

Railway upgrade Autumn 2018

Between **Saturday 15 September and Sunday 7 October** and over the weekend of **13-14 October 2018**, we'll be working around the clock to upgrade your railway.

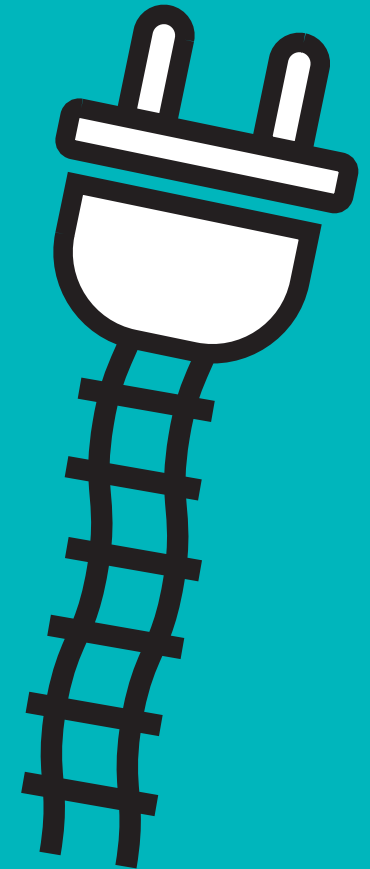
What does the work involve?

We will be testing the overhead line equipment which we have installed between Royal Wootton Bassett and Winterbourne. The work should not be particularly noisy but there will be vehicles and workers on track throughout the three weeks. Our compounds and worksites close to the railway will be busier than usual. We have reminded all staff and contractors to be considerate of our neighbours.

What are the benefits?

The equipment will enable trains to start running under electric power in 2019, bringing more trains with more seats for passengers and quieter services for people who live by the railway.

Find out more at networkrail.co.uk/westernupgrade
Check before you travel at nationalrail.co.uk



Working for you